

**HIP**



**STEM**

We manufacture **Hip & Knee** Systems;

- + Perfect anatomic fit
- + Least amount of bone loss
- + Fast recovery



# Motivation for health



Our brands:

ORTO **HIP**  
ORTO **KNEE**

## **About Ortonom**

From our foundation up to today , we targeted at being a company adopting a production policy that enables products with original and best design. In a short time , Ortonom Medical has grown into a prestigious and preferred company setting off in the market with a young and dynamic team supported by the sound technology investments. Thanks to its visionary management and production in the field of orthopedic and traumatology in its modern facilities, it has become a company experiencing a rapid increase in market share.

After a short time of its foundation, the company began to operate in overseas markets by serving many partners in a great number of countries. Aware of our aim, we will further improve into the future along with the same line.

# ORTO<sup>+</sup>HIP

+ OrtoHip Hip Prosthesis consists of 3 models; Partial, Total and Revision. OrtoHip offers the most permanent solution for hip deformities and fractures. The prosthetic procedure includes the applications of Calcar, Zweymüller, Corail System and Revision, cemented or cementless. Partial and Total procedures are carried out in accordance with these systems.

+ They are manufactured with precise technique of CoCr with casting and titanium with forging methods.

# TOTAL HIP SYSTEM

Consists of 2 different systems:

## + CEMENTLESS TOTAL HIP PROSTHESIS

consists of Cementless Femoral Stem,  
Metal Head, Acetabular PE Liner,  
Acetabular CupScrew and Ha  
Coated Acetabular Cup.

## + CEMENTED TOTAL HIP PROSTHESIS

consists of Cemented Femoral Stem,  
Metal Head and Cemented Acetabular  
PE CUP.



## CEMENTLESS & CEMENTED TOTAL HIP SYSTEM

+ Total hip prosthesis is the operation for replacing a hip joint that has been damaged due to primary or secondary cause and has advanced osteoarthritis.

+ The total hip prosthesis, aims to create an artificial joint to provide painless joint movement by specially designed parts manufactured from CoCr, Ha coated Titanium and PE 1020 materials.

+ Femoral Stems are used as porous surface with Ha coating or Polish surface.

+ 3 different Femoral stem option provides variability.

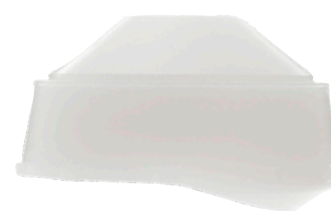
### CEMENTLESS ACETABULAR CUP

- + Manufactured from CoCr and Titanium materials.
- + The exterior surface is coated with DUAL/Ha, which enables better bone integration.
- + The grooved screw points allow fixation to the bone.
- + Anti-rotational spikes on the side surfaces help ensure stabilization.
- + Insert is locked with a special locking mechanism.
- + Manufactured in the dimensions:  
42 / 44 / 46 / 48 / 50 / 52 / 54 / 56 / 58 / 60 / 62



### LINER

- + Manufactured by PE 1020 material.
- + Special locking feature to be locked into acetabular cup.
- + 0 / 10 / 20 degrees are available.
- + 42 / 44 / 46 / 48 - can be used with - 28 mm Metal Head
- + 50 / 52 - can be used with - 32 mm Metal Head
- + 54 / 56 / 58 / 60 / 62 - can be used with - 36 mm Metal Head



### METAL HEAD

- + Manufactured from CoCr / Titanium material with a polished surface.
- + Interior conic diameter is manufactured in accordance with 12 / 14 mm cone specifications of the femoral stem. It has 5 different sizes to adjust the interior depth size.
- + Has an exterior diameter of Ø28mm, Ø32mm, Ø36mm and -6 /-3 / 0 /+3 /+6 interior conic diameter sizes.

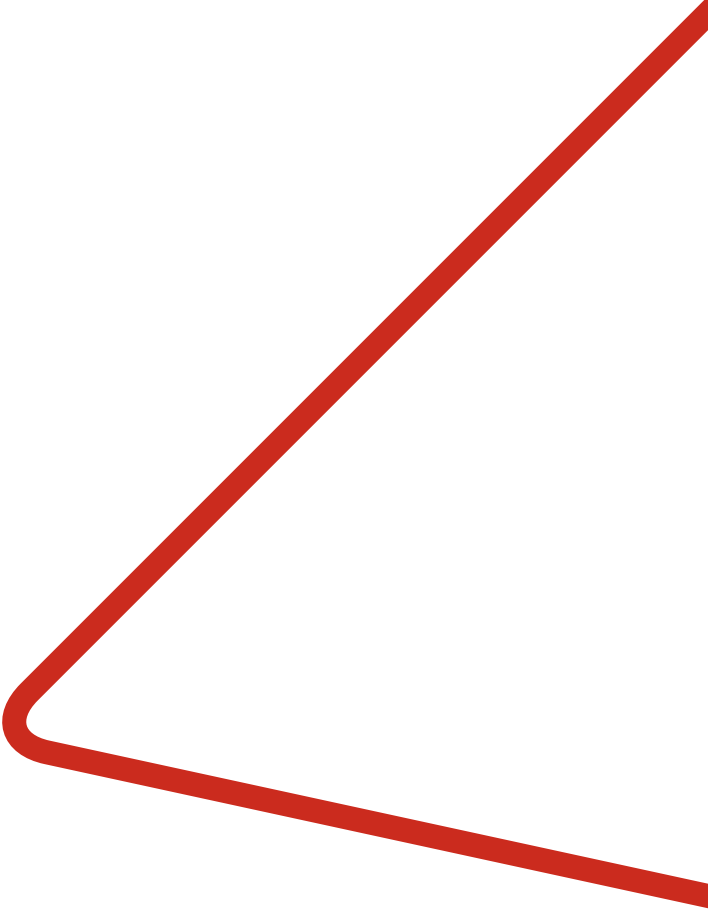


### CEMENTLESS FEMORAL STEM

- + Manufactured from CoCr and Titanium materials.
- + Provides full stability with DUAL/Ha coating and special attachment channels on the surface for bone integration.
- + Has a neck angle of 135 degrees and cone of 12/14 mm.
- + Available in sterile forms with these sizes:  
1 / 2 / 3 / 4 / 5 / 6 / 7 / 8 / 9 / 10







### CEMENTED ACETABULAR CUP

- + Manufactured by PE 1020 material.
- + Suitable for use with cement.
- + The special groove structure provides high stabilization to the bone through cement.
- + Can be used with Metal Head in sizes of:

Ø 42 / 44 cups can be used with - 28 mm Metal Head

Ø 46 / 48 / 50 / 52 cups can be used with - 32 mm Metal Head

Ø 54 / 56 / 58 / 60 cups can be used with - 36 mm Metal Head

0 / 10 degrees are available.



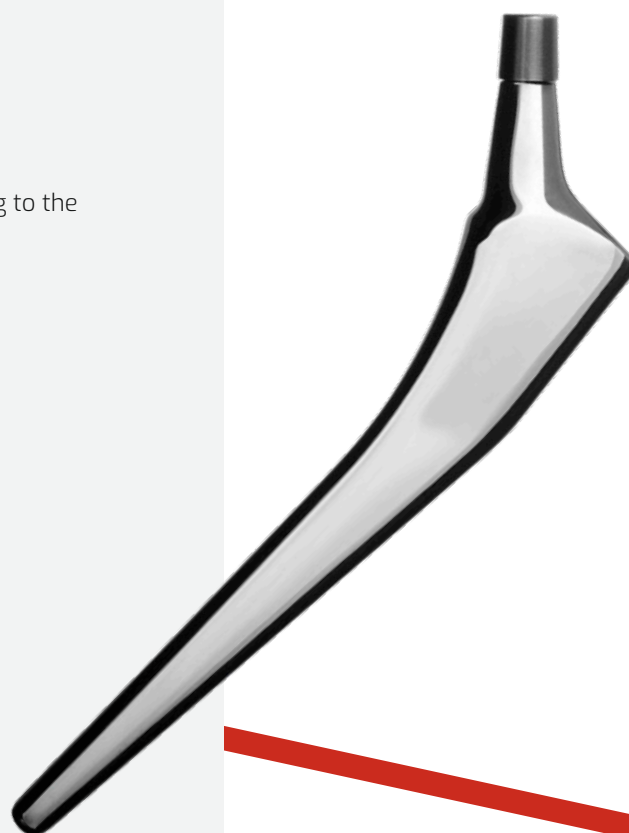
### METAL HEAD

- + Manufactured from CoCr / Titanium material with a polished surface.
- + Interior conic diameter is manufactured in accordance with 12 / 14 mm cone specifications of the femoral stem. It has 5 different sizes to adjust the interior depth size.
- + Has an exterior diameter of Ø28mm, Ø32mm, Ø36mm and -6 /-3 / 0 /+3 /+6 interior conic diameter sizes.



### CEMENTED FEMORAL STEM

- + Manufactured from CoCr and Titanium materials.
- + The exterior surfaces are manufactured as polished according to the requirements of the system.
- + It ensures the stabilization of bone through cement.
- + It has a neck angle of 135 degrees and cone of 12/14 mm.
- + Available in sterile forms with these sizes:  
1 / 2 / 3 / 4 / 5 / 6 / 7 / 8 / 9 / 10



# ORTO+HIP

+ OrtoHip Hip Prosthesis consists of 3 models; Partial, Total and Revision. OrtoHip offers the most permanent solution for hip deformities and fractures. The prosthetic procedure includes the applications of Calcar and Revision, cemented or cementless. Partial and Total procedures are carried out in accordance with these systems.

+ They are manufactured with precise technique of CoCr with casting and titanium with forging methods.

# BIPOLAR HIP SYSTEM

The system consists of Cemented and Cementless Femoral Stem, Metal Head and Bipolar Cup components. Comparing to other treatment methods, this type of operations provides better results for the patients after the surgery based on medical literature.



## BIPOLAR HIP SYSTEM

+ It is the type of prosthesis in which the femoral head and neck, or in other words the upper end of the femur is replaced, with the preservation of acetabulum. Bipolar hip prosthesis consists of 3 parts:

- 1- Femoral Stem (Cemented or Cementless and CoCr or Titanium)
- 2- Metal Head
- 3- Bipolar Cup

+ Femoral Stems are designed as cemented and cementless HA-coated.

+ CoCr and PE material are assembled together forming the Bipolar Cup and motion is provided by insertion of the Metal Head into Bipolar Cup with the help of the locking mechanism.

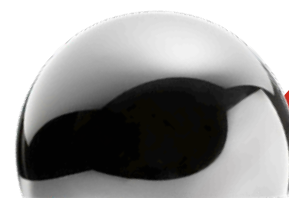
+ This system is used for cases where total hip replacement is not indicated.



### BIPOLAR CUP

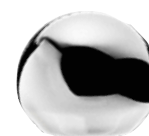
- + CoCr / Titanium material is polished and assembled with PE 1020 material liner with a locking mechanism.
- + Manufactured in the dimensions:

42 / 44 / 46 / 48 / 50 / 52 / 54 / 56 / 58 / 60 / 62



### METAL HEAD

- + Manufactured from CoCr / Titanium material with a polished surface.
- + Interior conic diameter is manufactured in accordance with 12 / 14 mm cone specifications of the femoral stem. It has 5 different sizes to adjust the interior depth size.
- + Has an exterior diameter of Ø28mm and -6 /-3 / 0 /+3 /+6 interior conic diameter sizes.



### CEMENTED FEMORAL STEM

- + Manufactured from CoCr and Titanium materials.
- + Provides full stability with Ha coating and special attachment channels on the surface for bone integration.
- + Has a neck angle of 135 degrees and cone of 12/14 mm.
- + Available in sterile forms with these sizes:

1 / 2 / 3 / 4 / 5 / 6 / 7 / 8 / 9 / 10



### CEMENTLESS FEMORAL STEM

- + Manufactured from CoCr and Titanium materials.
- + Provides full stability with DUAL/Ha coating and special attachment channels on the surface for bone integration.
- + Has a neck angle of 135 degrees and cone of 12/14 mm.
- + Available in sterile forms with these sizes:

1 / 2 / 3 / 4 / 5 / 6 / 7 / 8 / 9 / 10



# ORTO+HIP

+ OrtoHip Hip Prosthesis consists of 3 models; Partial, Total and Revision. OrtoHip offers the most permanent solution for hip deformities and fractures. The prosthetic procedure includes the applications of Calcar and Revision, cemented or cementless. Partial and Total procedures are carried out in accordance with these systems.

+ They are manufactured with precise technique of CoCr with casting and titanium with forging methods.

# REVISION TOTAL HIP SYSTEM

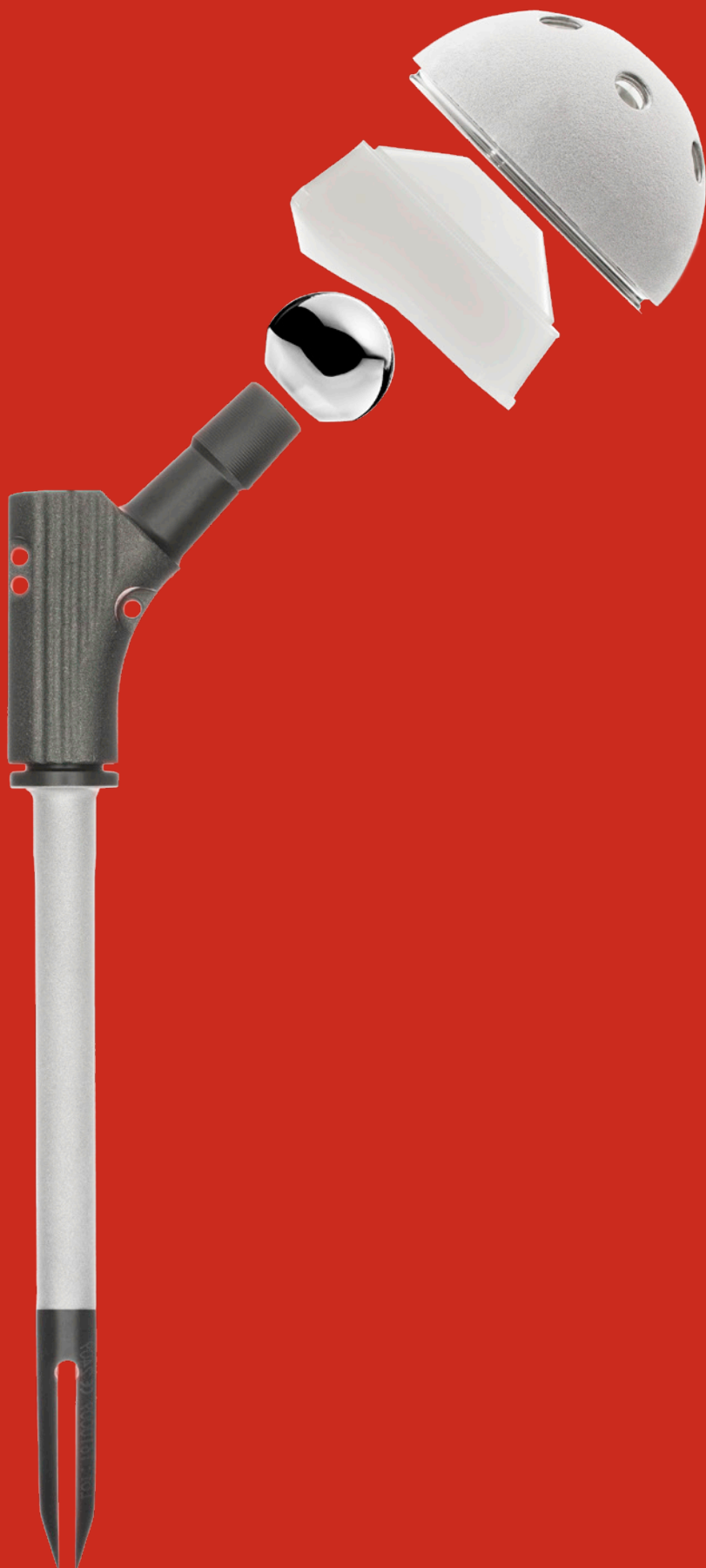
Consists of 2 different systems:

## + CEMENTLESS REVISION HIP

PROSTHESIS consists of Cementless Revision Femoral Stem, Metal Head, Acetabular PE Liner, Acetabular Cup Screw and Ha Coated Cementless Acetabular Cup.

## + CEMENTED REVISION

HIPPROSTHESIS consists of Cemented Revision Femoral Stem, Metal Head and Cemented Acetabular PE CUP.





## REVISION TOTAL HIP SYSTEM

+ Revision total hip prosthesis is the procedure of removing the existing prosthesis as a result of complications such as loosening of the hip and prosthesis, pain and infection in the patients who have undergone prosthesis surgery, and then placing the appropriate and true prosthesis.

+ It is manufactured from CoCr and Titanium materials.

+ Acetabular cup, Liner and Metal Head components are same used in Total Hip Prosthesis. Therefore, different femoral stem options are available in revision surgery.



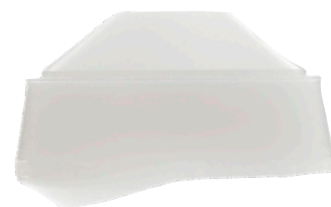
### CEMENTLESS ACETABULAR CUP

- + Manufactured from CoCr and Titanium materials.
- + The exterior surface is coated with DUAL/HA, which enables better bone integration.
- + The grooved screw points allow fixation to the bone.
- + Anti-rotational spikes on the side surfaces help ensure stabilization.
- + Insert is locked with a special locking mechanism.
- + Manufactured in the dimensions:  
42 / 44 / 46 / 48 / 50 / 52 / 54 / 56 / 58 / 60 / 62



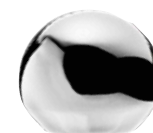
### LINER

- + Manufactured by PE 1020 material.
- + Special locking feature to be locked into acetabular cup.
- + 0 / 10 / 20 degrees are available.
- + 42 / 44 / 46 / 48 - can be used with - 28 mm Metal Head
- + 50 / 52 - can be used with - 32 mm Metal Head
- + 54 / 56 / 58 / 60 / 62 - can be used with - 36 mm Metal Head



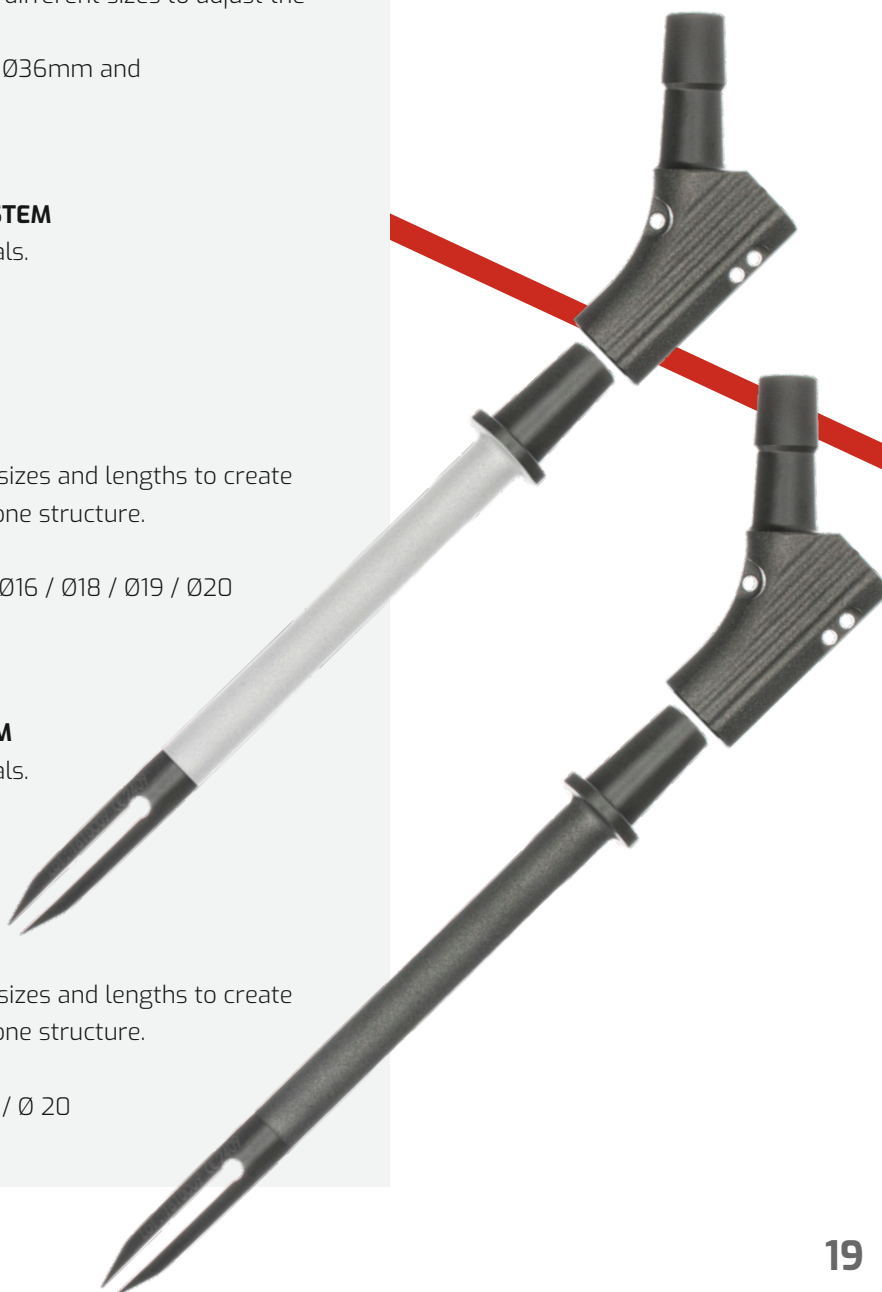
### METAL HEAD

- + Manufactured from CoCr Titanium material with a polished surface.
- + Interior conic diameter is manufactured in accordance with 12 / 14 mm cone specifications of the femoral stem. It has 5 different sizes to adjust the interior depth size.
- + Has an exterior diameter of Ø28mm, Ø32mm, Ø36mm and -6 /-3 / 0 /+3 /+6 interior conic diameter sizes.



### CEMENTLESS MODULAR REVISION FEMORAL STEM

- + Manufactured from CoCr and Titanium materials.
- + Manufactured with 135 degree neck angle and cone of 12/14 mm.
- + Consists of two parts; body and stem.
- + The body and stem are fixed to each other with titanium screws and then rotated.
- + Body and Stem are manufactured in different sizes and lengths to create the most appropriate size and implant for the bone structure.
- + Body - 42 / 48 / 58 mm
- + Stem diameter - Ø 10 / Ø12 / Ø13 / Ø14 / Ø15 / Ø16 / Ø18 / Ø19 / Ø20
- + Stem length - 142 / 172 / 212 mm



### CEMENTED MODULAR REVISION FEMORAL STEM

- + Manufactured from CoCr and Titanium materials.
- + Manufactured with 135 degree neck angle and cone of 12/14 mm.
- + Consists of two parts; body and stem.
- + The body and stem are fixed to each other with titanium screws and then rotated.
- + Body and Stem are manufactured in different sizes and lengths to create the most appropriate size and implant for the bone structure.
- + Body - 42 / 48 / 58 mm
- + Stem diameter - Ø 12 / Ø 13 / Ø 14 / Ø 16 / Ø 18 / Ø 20
- + Stem length - 145 / 175 / 200 mm

## CEMENTLESS FEMORAL STEM STANDART CoCr - DUAL/HA COATED



CATALOG NO		Size
S S - 0 0 1	CoCr	1
S S - 0 0 2	CoCr	2
S S - 0 0 3	CoCr	3
S S - 0 0 4	CoCr	4
S S - 0 0 5	CoCr	5
S S - 0 0 6	CoCr	6
S S - 0 0 7	CoCr	7
S S - 0 0 8	CoCr	8
S S - 0 0 9	CoCr	9
S S - 0 1 0	CoCr	10
S S T - 0 0 1	Titanium	1
S S T - 0 0 2	Titanium	2
S S T - 0 0 3	Titanium	3
S S T - 0 0 4	Titanium	4
S S T - 0 0 5	Titanium	5
S S T - 0 0 6	Titanium	6
S S T - 0 0 7	Titanium	7
S S T - 0 0 8	Titanium	8
S S T - 0 0 9	Titanium	9
S S T - 0 1 0	Titanium	10

## CEMENTED POLISHED FEMORAL STEM STANDART



CATALOG NO		Size
S S C P - 0 0 1	CoCr	1
S S C P - 0 0 2	CoCr	2
S S C P - 0 0 3	CoCr	3
S S C P - 0 0 4	CoCr	4
S S C P - 0 0 5	CoCr	5
S S C P - 0 0 6	CoCr	6
S S C P - 0 0 7	CoCr	7
S S C P - 0 0 8	CoCr	8
S S C P - 0 0 9	CoCr	9
S S C P - 0 1 0	CoCr	10
S S C P T - 0 0 1	Titanium	1
S S C P T - 0 0 2	Titanium	2
S S C P T - 0 0 3	Titanium	3
S S C P T - 0 0 4	Titanium	4
S S C P T - 0 0 5	Titanium	5
S S C P T - 0 0 6	Titanium	6
S S C P T - 0 0 7	Titanium	7
S S C P T - 0 0 8	Titanium	8
S S C P T - 0 0 9	Titanium	9
S S C P T - 0 1 0	Titanium	10

**CEMENTED CALCAR STEM - CoCr**


CATALOG NO	Ø	Size /mm
K S - 1 0 - 2 5 0	Ø 10	250
K S - 1 0 - 3 5 0	Ø 10	350
K S - 1 0 - 4 5 0	Ø 10	450
K S - 1 2 - 2 5 0	Ø 12	250
K S - 1 2 - 3 5 0	Ø 12	350
K S - 1 2 - 4 5 0	Ø 12	450
K S - 1 4 - 2 5 0	Ø 14	250
K S - 1 4 - 3 5 0	Ø 14	350
K S - 1 4 - 4 5 0	Ø 14	450
K S - 1 6 - 2 5 0	Ø 16	250
K S - 1 6 - 3 5 0	Ø 16	350
K S - 1 6 - 4 5 0	Ø 16	450

**METAL HEAD**

CATALOG NO		Size
M B T - 2 8 - 6	Titanium	Ø 28 /-6
M B T - 2 8 - 3	Titanium	Ø 28 /-3
M B T - 2 8 / 0	Titanium	Ø 28 / 0
M B T - 2 8 + 3	Titanium	Ø 28 /+3
M B T - 2 8 + 6	Titanium	Ø 28 /+6
M B T - 3 2 - 6	Titanium	Ø 32 /-6
M B T - 3 2 - 3	Titanium	Ø 32 /-3
M B T - 3 2 / 0	Titanium	Ø 32 / 0
M B T - 3 2 + 3	Titanium	Ø 32 /+3
M B T - 3 2 + 6	Titanium	Ø 32 /+6
M B T - 3 6 - 6	Titanium	Ø 36 /-6
M B T - 3 6 - 3	Titanium	Ø 36 /-3
M B T - 3 6 / 0	Titanium	Ø 36 / 0
M B T - 3 6 + 3	Titanium	Ø 36 /+3
M B T - 3 6 + 6	Titanium	Ø 36 /+6



CATALOG NO		Size
M B - 2 8 - 6	CoCr	Ø 28 /-6
M B - 2 8 - 3	CoCr	Ø 28 /-3
M B - 2 8 / 0	CoCr	Ø 28 / 0
M B - 2 8 + 3	CoCr	Ø 28 /+3
M B - 2 8 + 6	CoCr	Ø 28 /+6
M B - 3 2 - 6	CoCr	Ø 32 /-6
M B - 3 2 - 3	CoCr	Ø 32 /-3
M B - 3 2 / 0	CoCr	Ø 32 / 0
M B - 3 2 + 3	CoCr	Ø 32 /+3
M B - 3 2 + 6	CoCr	Ø 32 /+6
M B - 3 6 - 6	CoCr	Ø 36 /-6
M B - 3 6 - 3	CoCr	Ø 36 /-3
M B - 3 6 / 0	CoCr	Ø 36 / 0
M B - 3 6 + 3	CoCr	Ø 36 /+3
M B - 3 6 + 6	CoCr	Ø 36 /+6

## UHMWPE LINER



CATALOG NO	Type	Size
AL-28-0-42-44	0°	Ø 28 x 42/44
AL-28-0-46-48	0°	Ø 28 x 46/48
AL-32-0-50-52	0°	Ø 32 x 50/52
AL-36-0-54-56	0°	Ø 36 x 54/56
AL-36-0-58-60-62	0°	Ø 36 x 58/60/62
AL-28-10-42-44	10°	Ø 28 x 42/44
AL-28-10-46-48	10°	Ø 28 x 46/48
AL-32-10-50-52	10°	Ø 32 x 50/52
AL-36-10-54-56	10°	Ø 36 x 54/56
AL-36-10-58-60-62	10°	Ø 36 x 58/60/62
AL-28-20-42-44	20°	Ø 28 x 42/44
AL-28-20-46-48	20°	Ø 28 x 46/48
AL-32-20-50-52	20°	Ø 32 x 50/52
AL-36-20-54-56	20°	Ø 36 x 54/56
AL-36-20-58-60-62	20°	Ø 36 x 58/60/62

## ACETABULAR CUP - DUAL + HA COATED



CATALOG NO		Size
A C - 4 2	CoCr	Ø 42
A C - 4 4	CoCr	Ø 44
A C - 4 6	CoCr	Ø 46
A C - 4 8	CoCr	Ø 48
A C - 5 0	CoCr	Ø 50
A C - 5 2	CoCr	Ø 52
A C - 5 4	CoCr	Ø 54
A C - 5 6	CoCr	Ø 56
A C - 5 8	CoCr	Ø 58
A C - 6 0	CoCr	Ø 60
A C - 6 2	CoCr	Ø 62
A C T - 4 2	Titanium	Ø 42
A C T - 4 4	Titanium	Ø 44
A C T - 4 6	Titanium	Ø 46
A C T - 4 8	Titanium	Ø 48
A C T - 5 0	Titanium	Ø 50
A C T - 5 2	Titanium	Ø 52
A C T - 5 4	Titanium	Ø 54
A C T - 5 6	Titanium	Ø 56
A C T - 5 8	Titanium	Ø 58
A C T - 6 0	Titanium	Ø 60
A C T - 6 2	Titanium	Ø 62

**CEMENTED ACETABULAR CUP - UHMWPE POLYETHYLENE - 0°**

CATALOG NO	Size
A C P - 0 - 4 0	0° Ø 40
A C P - 0 - 4 2	0° Ø 42
A C P - 0 - 4 4	0° Ø 44
A C P - 0 - 4 6	0° Ø 46
A C P - 0 - 4 8	0° Ø 48
A C P - 0 - 5 0	0° Ø 50
A C P - 0 - 5 2	0° Ø 52
A C P - 0 - 5 4	0° Ø 54
A C P - 0 - 5 6	0° Ø 56
A C P - 0 - 5 8	0° Ø 58
A C P - 0 - 6 0	0° Ø 60
A C P - 0 - 6 2	0° Ø 62
A C P - 0 - 6 4	0° Ø 64



CATALOG NO	Size
A C P - 10 - 4 0	10° Ø 40
A C P - 10 - 4 2	10° Ø 42
A C P - 10 - 4 4	10° Ø 44
A C P - 10 - 4 6	10° Ø 46
A C P - 10 - 4 8	10° Ø 48
A C P - 10 - 5 0	10° Ø 50
A C P - 10 - 5 2	10° Ø 52
A C P - 10 - 5 4	10° Ø 54
A C P - 10 - 5 6	10° Ø 56
A C P - 10 - 5 8	10° Ø 58
A C P - 10 - 6 0	10° Ø 60
A C P - 10 - 6 2	10° Ø 62
A C P - 10 - 6 4	10° Ø 64

**BIPOLAR CUP**

CATALOG NO	Size
B C - 0 4 2	CoCr Ø 42
B C - 0 4 4	CoCr Ø 44
B C - 0 4 6	CoCr Ø 46
B C - 0 4 8	CoCr Ø 48
B C - 0 5 0	CoCr Ø 50
B C - 0 5 2	CoCr Ø 52
B C - 0 5 4	CoCr Ø 54
B C - 0 5 6	CoCr Ø 56
B C - 0 5 8	CoCr Ø 58
B C - 0 6 0	CoCr Ø 60
B C - 0 6 2	CoCr Ø 62
B C - 0 6 4	CoCr Ø 64
B C T - 0 4 2	Titanium Ø 42
B C T - 0 4 4	Titanium Ø 44
B C T - 0 4 6	Titanium Ø 46
B C T - 0 4 8	Titanium Ø 48
B C T - 0 5 0	Titanium Ø 50
B C T - 0 5 2	Titanium Ø 52
B C T - 0 5 4	Titanium Ø 54
B C T - 0 5 6	Titanium Ø 56
B C T - 0 5 8	Titanium Ø 58
B C T - 0 6 0	Titanium Ø 60
B C T - 0 6 2	Titanium Ø 62
B C T - 0 6 4	Titanium Ø 64



## REVISION MODULAR LOCKING SCREW - Titanium



CATALOG NO	Size
M R S - 0 0 1	std

## REVISION MODULAR BODY - Titanium



CATALOG NO	Size
R G - 4 2	42
R G - 4 8	48
R G - 5 8	58

## CEMENTED MODULAR REVISION STEM - Titanium



CATALOG NO	Size
M R S - 10 - 14 5	Ø 10 -145
M R S - 10 - 17 5	Ø 10 -175
M R S - 10 - 20 0	Ø 10 -200
M R S - 12 - 14 5	Ø 12 -145
M R S - 12 - 17 5	Ø 12 -175
M R S - 12 - 20 0	Ø 12 -200
M R S - 14 - 14 5	Ø 14 -145
M R S - 14 - 17 5	Ø 14 -175
M R S - 14 - 20 0	Ø 14 -200
M R S - 16 - 14 5	Ø 16 -145
M R S - 16 - 17 5	Ø 16 -175
M R S - 16 - 20 0	Ø 16 -200
M R S - 18 - 14 5	Ø 18 -145
M R S - 18 - 17 5	Ø 18 -175
M R S - 18 - 20 0	Ø 18 -200

**REVISION MODULAR LOCKING SCREW - Titanium**



CATALOG NO	Size
M R S - 0 0 1	std

**REVISION MODULAR BODY - Titanium**



CATALOG NO	Size
R G - 4 2	42
R G - 4 8	48
R G - 5 8	58

**CEMENTLESS MODULAR REVISION STEM - Titanium**



DUAL COATED

CATALOG NO	Size
R F S - 10 - 14 2	Ø 10 -142
R F S - 10 - 17 2	Ø 10 -172
R F S - 10 - 21 2	Ø 10 -212*
R F S - 12 - 14 2	Ø 12 -142
R F S - 12 - 17 2	Ø 12 -172
R F S - 12 - 21 2	Ø 12 -212*
R F S - 13 - 14 2	Ø 13 -142
R F S - 13 - 17 2	Ø 13 -172
R F S - 13 - 21 2	Ø 13 -212*
R F S - 14 - 14 2	Ø 14 -142
R F S - 14 - 17 2	Ø 14 -172
R F S - 14 - 21 2	Ø 14 -212*
R F S - 15 - 14 2	Ø 15 -142
R F S - 15 - 17 2	Ø 15 -172
R F S - 15 - 21 2	Ø 15 -212*
R F S - 16 - 14 2	Ø 16 -142
R F S - 16 - 17 2	Ø 16 -172
R F S - 16 - 21 2	Ø 16 -212*
R F S - 17 - 14 2	Ø 17 -142
R F S - 17 - 17 2	Ø 17 -172
R F S - 17 - 21 2	Ø 17 -212*
R F S - 18 - 14 2	Ø 18 -142
R F S - 18 - 17 2	Ø 18 -172
R F S - 18 - 21 2	Ø 18 -212*
R F S - 19 - 14 2	Ø 19 -142
R F S - 19 - 17 2	Ø 19 -172
R F S - 19 - 21 2	Ø 19 -212*
R F S - 20 - 14 2	Ø 20 -142
R F S - 20 - 17 2	Ø 20 -172
R F S - 20 - 21 2	Ø 20 -212*

\*Custom



## CABLE



CATALOG NO	Material	Size
C - 3 0 0	CoCr	300mm
C - 4 0 0	CoCr	400mm
T C - 3 0 0	Titanium	300mm
T C - 4 0 0	Titanium	400mm

## ACETABULAR TITANIUM SCREW



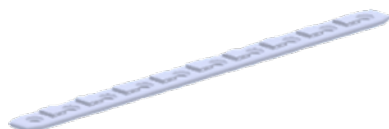
CATALOG NO	Size
A S - 6 5 1 5	6.5X15
A S - 6 5 2 0	6.5X20
A S - 6 5 2 5	6.5X25
A S - 6 5 3 0	6.5X30
A S - 6 5 3 5	6.5X35
A S - 6 5 4 0	6.5X40
A S - 6 5 4 5	6.5X45
A S - 6 5 5 0	6.5X50

## CABLE HOOK PLATE



CATALOG NO	Size
K H P - S M L	Small
K H P - M D	Medium
K H P - L R G	Large

## CABLE FLAT PLATE



CATALOG NO	Size
K D P - S M L	Small
K D P - M D	Medium
K D P - L R G	Large

# ORTOKNEE

+ The OrtoKnee Total Knee Prosthesis accommodates a dual system comprising both of Fixed and Mobile systems. The system allows surgical intervention in two models that are Cruciate Retaining (C/R) and Posterior Stabilized (P/S). The most important feature is that both models can be used with a single implantation set.

+ With regard to the materials, CoCr (F75) is used in Femur and Tibia components and Pe 1020 is used in Insert component.

# MOBIL TOTAL KNEE SYSTEM

ORTOKNEE MOBILE TOTAL KNEE PROSTHESIS SYSTEM is designed as PS (Posterior Stabilized) and CR (Cruciate Retaining). The system has 3 parts; Femoral Component, PE Insert and Tibial Component. Femoral Component and Tibial Component are manufactured from CoCr, PE Insert is manufactured from PE 1020 Polyethylene material.



## MOBIL TOTAL KNEE SYSTEM

+ OrtoKnee Mobile Total Knee Prosthesis can be used as Posterior Stabilized (P/S) and Cruciate Retaining (C/R). It is composed of Femur, Insert and Tibia components. If the doctor prefers Tibia Extension (titanium) and Patella (Pe 1020) can be used.

+ Mobile feature offers the ability to make left and right rotation of Insert and Femur apart from Tibia. It has a special locking system to prevent the extrication of Insert from the Tibia.



### CRUCIATE RETAINING (C/R) AND POSTERIOR STABILIZED (P/S) FEMUR

- + Produced for right and left dimensions in accordance with the anatomical structure.
- + Suitable for common use in both mobile and fixed systems.
- + Provides strong integration and centering feature to the femoral bone thanks to its Peg design.
- + Its porous-coated structure allows better cement integration
- + Manufactured with Precision Casting logic using CoCr (F75) Material.
- + Both systems consist of 5 sizes for Right and Left:  
C / D / E / F / G



### MOBILE POSTERIOR STABILIZED (P/S) INSERT

- + The special Posterior Stabilized (P/S) structure prevents extreme anterior migration of femur in flexion position of knee joint.
- + Manufactured of Pe 1020 Material.
- + It has the feature that provides the ability of locking and mobility for Tibia. Femoral surface contact area has 0.2 Micron Ra surface.
- 2/ h - 10 / 12 / 14 / 16 / 18 / 20
- 4/ h - 10 / 12 / 14 / 16 / 18 / 20
- 5.5 / h - 10 / 12 / 14 / 16 / 18\* / 20\*



### MOBILE CRUCIATE RETAINING (C/R) INSERT

- + It has a flat structure due to its Cruciate Retaining Feature.
- + Manufactured of Pe 1020 Material.
- + It has the feature that provides the ability of locking and mobility for Tibia. The femoral surface contact area has a 0.2 Micron Ra surface.
- 2/ h - 10 / 12 / 14 / 16 / 18 / 20
- 4/ h - 10 / 12 / 14 / 16 / 18 / 20
- 5.5/ h - 10 / 12 / 14 / 16 / 18\* / 20\*



### MOBILE TIBIA

- + Thanks to its reinforced Tibial keel structure, it provides excellent cement integration to the bone.
- + Insert locking and contact surfaces have polishing features in accordance with 0.05 micron Ra.
- + Compatible with the extension adapter. It is manufactured with Precision Casting Logic using CoCr (F75) Material.
- + Consists of 5 sizes: 2 / 3 / 4 / 5 / 5.5



# ORTOKNEE

+ The OrtoKnee Total Knee Prosthesis accommodates a dual system comprising both of Fixed and Mobile systems. The system allows surgical intervention in two models that are Cruciate Retaining (C/R) and Posterior Stabilized (P/S). The most important feature is that both models can be used with a single implantation set.

+ With regard to the materials, CoCr (F75) is used in Femur and Tibia components and Pe 1020 is used in Insert component.

# FIXED KNEE SYSTEM

ORTOKNEE FIX TOTAL KNEE PROSTHESIS SYSTEM is designed as PS (Posterior Stabilized) and CR (Cruciate Retaining). The system has 3 parts; Femoral Component, PE Insert and Tibial Component. Femoral Component and Tibial Component are manufactured from CoCr, PE Insert is manufactured from PE 1020 Polyethylene material.



## FIXED TOTAL KNEE SYSTEM

+ OrtoKnee Fixed Total Knee Prosthesis can be used as Posterior Stabilized (P/S) and Cruciate Retaining (C/R). It is composed of Femur, Insert and Tibia components. If the doctor prefers Tibia Extension (titanium) and Patella (Pe 1020) can be used.

+ Fixed feature ensures a constant locking of the Insert into the Tibia thanks to its special grooves in Tibia and Insert.1 Cruciate Retaining (C/R) and Po





### CRUCIATE RETAINING (C/R) AND POSTERIOR STABILIZED (P/S) FEMUR

- + Produced for right and left dimensions in accordance with the anatomical structure.
- + Suitable for common use in both mobile and fixed systems.
- + Provides strong integration and centering feature to the femoral bone thanks to its Peg design.
- + Its porous-coated structure allows better cement integration
- + Manufactured with Precision Casting logic using CoCr (F75) Material.
- + Both systems consist of 5 sizes for Right and Left:  
C / D / E / F / G



### FIXED POSTERIOR STABILIZED (P/S) INSERT

- + The special Posterior Stabilized (P/S) structure prevents the withdrawal of Femur after implantation.
- + Manufactured of Pe 1020 Material.
- + Thanks to its specific grooves, it can be locked to Tibia and prevents left and right rotation. The femoral surface contact area has a 0.2 Micron Ra surface.

- 2/ h - 10 / 12 / 14 / 16 / 18 / 20
- 3/ h - 10 / 12 / 14 / 16 / 18 / 20
- 4/ h - 10 / 12 / 14 / 16 / 18 / 20
- 5/ h - 10 / 12 / 14 / 16 / 18\* / 20\*
- 5.5/ h - 10 / 12 / 14 / 16 / 18\* / 20\*



### FIXED CRUCIATE RETAINING (C/R) INSERT

- + Has a flat structure due to its Cruciate Retaining Feature.
- + Manufactured of Pe 1020 Material.
- + Thanks to its specific grooves, it can be locked to Tibia and prevents left and right rotation. The femoral surface contact area has a 0.2 Micron Ra surface.

- 2/ h - 10 / 12 / 14 / 16 / 18 / 20
- 3/ h - 10 / 12 / 14 / 16 / 18\* / 20\*
- 4/ h - 10 / 12 / 14 / 16 / 18 / 20
- 5/ h - 10 / 12 / 14 / 16 / 18\* / 20\*
- 5.5/ h - 10 / 12 / 14 / 16 / 18\* / 20\*



### FIXED TIBIA

- + Thanks to its reinforced Tibial keel structure, it provides excellent cement integration to the bone.
- + It is locked with compatible dovetail grooves for fixing Insert and Tibia together.+ Compatible with the extension adapter. It is manufactured with Precision Casting Logic using CoCr (F75) Material.
- + Consists of 5 sizes:  
2 / 3 / 4 / 5 / 5.5



## PS FEMORAL COMPONENT - COCR



CATALOG NO	Direction	Size
D Z 0 0 0 2 2	Right	C 2
D Z 0 0 0 2 3	Right	D 2.5
D Z 0 0 0 2 4	Right	E 3
D Z 0 0 0 2 5	Right	F 3.5
D Z 0 0 0 2 6	Right	G 4.5
D Z 0 0 0 1 5	Left	C 2
D Z 0 0 0 1 6	Left	D 2.5
D Z 0 0 0 1 7	Left	E 3
D Z 0 0 0 1 8	Left	F 3.5
D Z 0 0 0 1 9	Left	G 4.5

## CR FEMORAL COMPONENT - COCR



CATALOG NO	Direction	Size
D Z 0 0 0 8	Right	C 2
D Z 0 0 0 9	Right	D 2.5
D Z 0 0 1 0	Right	E 3
D Z 0 0 1 1	Right	F 3.5
D Z 0 0 1 2	Right	G 4.5
D Z 0 0 0 1	Left	C 2
D Z 0 0 0 2	Left	D 2.5
D Z 0 0 0 3	Left	E 3
D Z 0 0 0 4	Left	F 3.5
D Z 0 0 0 5	Left	G 4.5

## MOBILE TIBIAL COMPONENT - COCR



CATALOG NO	Size
D Z 0 0 0 3 0	2
D Z 0 0 0 3 1	3
D Z 0 0 0 3 2	4
D Z 0 0 0 3 3	5
D Z 0 0 0 3 4	5.5

## FIXED TIBIAL COMPONENT - COCR



CATALOG NO	Size
D Z 0 0 0 4 0	2
D Z 0 0 0 4 1	3
D Z 0 0 0 4 2	4
D Z 0 0 0 4 3	5
D Z 0 0 0 4 4	5.5

**MOBILE CR INSERT - UHMW**

CATALOG NO	Size		CATALOG NO	Size
D Z 0 0 2 0 4	2 / 10		D Z 0 0 2 2 8	4 / 16
D Z 0 0 2 0 5	2 / 12		D Z 0 0 2 2 9	4 / 18
D Z 0 0 2 0 6	2 / 14		D Z 0 0 2 3 0	4 / 20
D Z 0 0 2 0 7	2 / 16		D Z 0 0 2 3 9	5,5 / 10
D Z 0 0 2 0 8	2 / 18		D Z 0 0 2 4 0	5,5 / 12
D Z 0 0 2 0 9	2 / 20		D Z 0 0 2 4 1	5,5 / 14
D Z 0 0 2 2 5	4 / 10		D Z 0 0 2 4 2	5,5 / 16
D Z 0 0 2 2 6	4 / 12		D Z 0 0 2 4 3	5,5 / 18*
D Z 0 0 2 2 7	4 / 14		D Z 0 0 2 4 4	5,5 / 20*

**MOBILE PS INSERT - UHMW**

CATALOG NO	Size		CATALOG NO	Size
D Z 0 0 1 0 6	2 / 10		D Z 0 0 1 3 0	4 / 16
D Z 0 0 1 0 7	2 / 12		D Z 0 0 1 3 1	4 / 18
D Z 0 0 1 0 8	2 / 14		D Z 0 0 1 3 2	4 / 20
D Z 0 0 1 0 9	2 / 16		D Z 0 0 1 4 1	5,5 / 10
D Z 0 0 1 1 0	2 / 18		D Z 0 0 1 4 2	5,5 / 12
D Z 0 0 1 1 1	2 / 20		D Z 0 0 1 4 3	5,5 / 14
D Z 0 0 1 2 7	4 / 10		D Z 0 0 1 4 4	5,5 / 16
D Z 0 0 1 2 8	4 / 12		D Z 0 0 1 4 5	5,5 / 18*
D Z 0 0 1 2 9	4 / 14		D Z 0 0 1 4 6	5,5 / 20*

**FIXED CR INSERT - UHMW**

CATALOG NO	Size		CATALOG NO	Size
D Z 0 0 4 4 9	2 / 10		D Z 0 0 4 7 3	4 / 16
D Z 0 0 4 5 0	2 / 12		D Z 0 0 4 7 4	4 / 18
D Z 0 0 4 5 1	2 / 14		D Z 0 0 4 7 5	4 / 20
D Z 0 0 4 5 2	2 / 16		D Z 0 0 4 7 7	5 / 10
D Z 0 0 4 5 3	2 / 18		D Z 0 0 4 7 8	5 / 12
D Z 0 0 4 5 4	2 / 20		D Z 0 0 4 7 9	5 / 14
D Z 0 0 4 6 3	3 / 10		D Z 0 0 4 8 0	5 / 16
D Z 0 0 4 6 4	3 / 12		D Z 0 0 4 8 1	5 / 18*
D Z 0 0 4 6 5	3 / 14		D Z 0 0 4 8 2	5 / 20*
D Z 0 0 4 6 6	3 / 16		D Z 0 0 4 8 4	5,5 / 10
D Z 0 0 4 6 7	3 / 18*		D Z 0 0 4 8 5	5,5 / 12
D Z 0 0 4 6 8	3 / 20*		D Z 0 0 4 8 6	5,5 / 14
D Z 0 0 4 7 0	4 / 10		D Z 0 0 4 8 7	5,5 / 16
D Z 0 0 4 7 1	4 / 12		D Z 0 0 4 8 8	5,5 / 18*
D Z 0 0 4 7 2	4 / 14		D Z 0 0 4 8 9	5,5 / 20*

## FIXED PS INSERT - UHMW

CATALOG NO	Size
D Z 0 0 3 5 1	2 / 10
D Z 0 0 3 5 2	2 / 12
D Z 0 0 3 5 3	2 / 14
D Z 0 0 3 5 4	2 / 16
D Z 0 0 3 5 5	2 / 18
D Z 0 0 3 5 6	2 / 20
D Z 0 0 3 6 5	3 / 10
D Z 0 0 3 6 6	3 / 12
D Z 0 0 3 6 7	3 / 14
D Z 0 0 3 6 8	3 / 16
D Z 0 0 3 6 9	3 / 18
D Z 0 0 3 7 0	3 / 20
D Z 0 0 3 7 2	4 / 10
D Z 0 0 3 7 3	4 / 12
D Z 0 0 3 7 4	4 / 14



CATALOG NO	Size
D Z 0 0 3 7 5	4 / 16
D Z 0 0 3 7 6	4 / 18
D Z 0 0 3 7 7	4 / 20
D Z 0 0 3 7 9	5 / 10
D Z 0 0 3 8 0	5 / 12
D Z 0 0 3 8 1	5 / 14
D Z 0 0 3 8 2	5 / 16
D Z 0 0 3 8 3	5 / 18*
D Z 0 0 3 8 4	5 / 20*
D Z 0 0 3 8 6	5,5 / 10
D Z 0 0 3 8 7	5,5 / 12
D Z 0 0 3 8 8	5,5 / 14
D Z 0 0 3 8 9	5,5 / 16
D Z 0 0 3 9 0	5,5 / 18*
D Z 0 0 3 9 1	5,5 / 20*

## PATELLAR - UHMWPE



CATALOG NO	Size
D Z 0 0 4 9 0	26*
D Z 0 0 4 9 1	30
D Z 0 0 4 9 2	34*
D Z 0 0 4 9 3	38*
D Z 0 0 4 9 4	42*

# REVISION KNEE SYSTEM



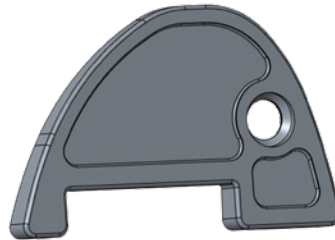
## STEM EXTENTION - Titanium



CATALOG NO	Size
D Z U 0 0 0 1	40
D Z U 0 0 0 2	60
D Z U 0 0 0 3	80

## CEMENTED FEMORAL ANTERIOR BLOCK - Titanium - SCREW INCLUDED

CATALOG NO	Size
R F A B - C - 5	C-5
R F A B - D - 5	D-5
R F A B - E - 5	E-5
R F A B - F - 5	F-5
R F A B - G - 5	G-5*
R F A B - H - 5	H-5*
R F A B - C - 6	C-6
R F A B - D - 6	D-6
R F A B - E - 6	E-6
R F A B - F - 6	F-6
R F A B - G - 6	G-6*
R F A B - H - 6	H-6*



CATALOG NO	Size
R F A B - C - 7	C-7
R F A B - D - 7	D-7
R F A B - E - 7	E-7
R F A B - F - 7	F-7
R F A B - G - 7	G-7*
R F A B - H - 7	H-7*
R F A B - C - 8	C-8
R F A B - D - 8	D-8
R F A B - E - 8	E-8
R F A B - F - 8	F-8
R F A B - G - 8	G-8*
R F A B - H - 8	H-8*

## REVISION TIBIA BLOCK - Titanium



CATALOG NO	Size
R T B - 2 - 1	2-1
R T B - 2 - 2	2-2
R T B - 3 - 1	3-1
R T B - 3 - 2	3-2
R T B - 4 - 1	4-1
R T B - 4 - 2	4-2
R T B - 5 - 1	5-1
R T B - 5 - 2	5-2
R T B - 5 . 5 - 1	5.5-1
R T B - 5 . 5 - 2	5.5-2

**FEMUR / TIBIAL EXTENSION STEM - Titanium**

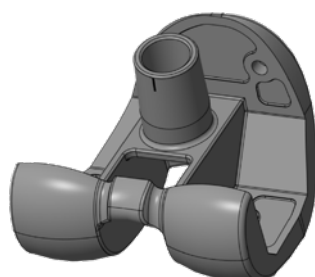
CATALOG NO	Size
RFTS-10-60	Ø10/60
RFTS-10-80	Ø10/80
RFTS-10-100	Ø10/100
RFTS-10-120	Ø10/120
RFTS-10-140	Ø10/140
RFTS-10-160	Ø10/160
RFTS-10-180	Ø10/180
RFTS-12-60	Ø12/60
RFTS-12-80	Ø12/80
RFTS-12-100	Ø12/100
RFTS-12-120	Ø12/120
RFTS-12-140	Ø12/140
RFTS-12-160	Ø12/160
RFTS-12-180	Ø12/180
RFTS-14-60	Ø14/60
RFTS-14-80	Ø14/80
RFTS-14-100	Ø14/100
RFTS-14-120	Ø14/120
RFTS-14-140	Ø14/140
RFTS-14-160	Ø14/160
RFTS-14-180	Ø14/180
RFTS-15-60	Ø15/60
RFTS-15-80	Ø15/80
RFTS-15-100	Ø15/100
RFTS-15-120	Ø15/120
RFTS-15-140	Ø15/140
RFTS-15-160	Ø15/160
RFTS-15-180	Ø15/180
RFTS-16-60	Ø16/60
RFTS-16-80	Ø16/80
RFTS-16-100	Ø16/100
RFTS-16-120	Ø16/120
RFTS-16-140	Ø16/140
RFTS-16-160	Ø16/160
RFTS-16-180	Ø16/180
RFTS-17-60	Ø17/60
RFTS-17-80	Ø17/80
RFTS-17-100	Ø17/100
RFTS-17-120	Ø17/120



CATALOG NO	Size
RFTS-17-140	Ø17/140
RFTS-17-160	Ø17/160
RFTS-17-180	Ø17/180
RFTS-18-60	Ø18/60
RFTS-18-80	Ø18/80
RFTS-18-100	Ø18/100
RFTS-18-120	Ø18/120
RFTS-18-140	Ø18/140
RFTS-18-160	Ø18/160
RFTS-18-180	Ø18/180
RFTS-19-60	Ø19/60
RFTS-19-80	Ø19/80
RFTS-19-100	Ø19/100
RFTS-19-120	Ø19/120
RFTS-19-140	Ø19/140
RFTS-19-160	Ø19/160
RFTS-19-180	Ø19/180
RFTS-20-60	Ø20/60
RFTS-20-80	Ø20/80
RFTS-20-100	Ø20/100
RFTS-20-120	Ø20/120
RFTS-20-140	Ø20/140
RFTS-20-160	Ø20/160
RFTS-20-180	Ø20/180
RFTS-22-60	Ø22/60
RFTS-22-80	Ø22/80
RFTS-22-100	Ø22/100
RFTS-22-120	Ø22/120
RFTS-22-140	Ø22/140
RFTS-22-160	Ø22/160
RFTS-22-180	Ø22/180
RFTS-24-60	Ø24/60
RFTS-24-80	Ø24/80
RFTS-24-100	Ø24/100
RFTS-24-120	Ø24/120
RFTS-24-140	Ø24/140
RFTS-24-160	Ø24/160
RFTS-24-180	Ø24/180

### FEMORAL COMPONENT - COCR

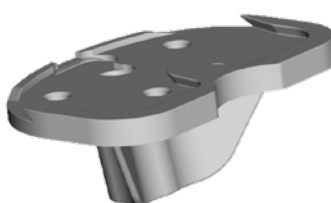
CATALOG NO	Direction	Size
R F L - C L	Left	C
R F L - D L	Left	D
R F L - E L	Left	E
R F L - F L	Left	F
R F L - G L	Left	G*
R F L - H L	Left	H*



CATALOG NO	Direction	Size
R F R - C R	Right	C
R F R - D R	Right	D
R F R - E R	Right	E
R F R - F R	Right	F
R F R - G R	Right	G*
R F R - H R	Right	H*

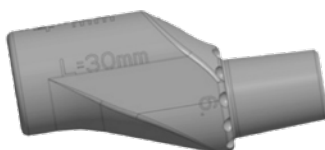
### REVISION TIBIA

CATALOG NO	Material	Size
R T K C - 2	CoCr	2
R T K C - 3	CoCr	3
R T K C - 4	CoCr	4
R T K C - 5	CoCr	5
R T K C - 5 . 5	CoCr	5.5



CATALOG NO	Material	Size
R T K T - 2	Titanium	2
R T K T - 3	Titanium	3
R T K T - 4	Titanium	4
R T K T - 5	Titanium	5
R T K T - 5 . 5	Titanium	5.5

### REVISION OFFSET ADAPTOR - Titanium

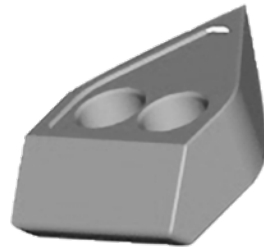


CATALOG NO	Size
R O A - 4 - 3 0	4 <sup>0</sup> -30
R O A - 7 - 3 0	7 <sup>0</sup> -30



## CEMENTED FEMORAL DISTAL BLOCK - Titanium - SCREW INCLUDED

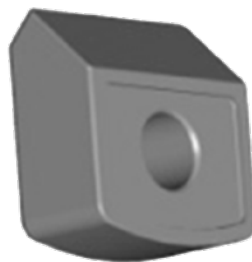
CATALOG NO	Size
R F D B - C - 5	C-5
R F D B - D - 5	D-5
R F D B - E - 5	E-5
R F D B - F - 5	F-5
R F D B - G - 5	G-5*
R F D B - H - 5	H-5*
R F D B - C - 7	C-7
R F D B - D - 7	D-7
R F D B - E - 7	E-7
R F D B - F - 7	F-7
R F D B - G - 7	G-7*
R F D B - H - 7	H-7*
R F D B - C - 9	C-9
R F D B - D - 9	D-9
R F D B - E - 9	E-9



CATALOG NO	Size
R F D B - F - 9	F-9
R F D B - G - 9	G-9*
R F D B - H - 9	H-9*
R F D B - C - 12	C-12
R F D B - D - 12	D-12
R F D B - E - 12	E-12
R F D B - F - 12	F-12
R F D B - G - 12	G-12*
R F D B - H - 12	H-12*
R F D B - C - 15	C-15
R F D B - D - 15	D-15
R F D B - E - 15	E-15
R F D B - F - 15	F-15
R F D B - G - 15	G-15*
R F D B - H - 15	H-15*

## CEMENTED FEMORAL POSTERIOR BLOCK - Titanium - SCREW INCLUDED

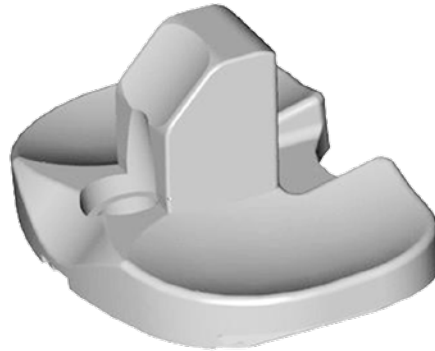
CATALOG NO	Size
R F P B - C - 5	C-5
R F P B - D - 5	D-5
R F P B - E - 5	E-5
R F P B - F - 5	F-5
R F P B - G - 5	G-5*
R F P B - H - 5	H-5*
R F P B - C - 7	C-7
R F P B - D - 7	D-7
R F P B - E - 7	E-7
R F P B - F - 7	F-7
R F P B - G - 7	G-7*
R F P B - H - 7	H-7*
R F P B - C - 9	C-9
R F P B - D - 9	D-9
R F P B - E - 9	E-9



CATALOG NO	Size
R F P B - F - 9	F-9
R F P B - G - 9	G-9*
R F P B - H - 9	H-9*
R F P B - C - 12	C-12
R F P B - D - 12	D-12
R F P B - E - 12	E-12
R F P B - F - 12	F-12
R F P B - G - 12	G-12*
R F P B - H - 12	H-12*
R F P B - C - 15	C-15
R F P B - D - 15	D-15
R F P B - E - 15	E-15
R F P B - F - 15	F-15
R F P B - G - 15	G-15*
R F P B - H - 15	H-15*

## REVISION INSERT UHMWPE POLYETHYLENE

CATALOG NO	Size
R I P - 2 - 1 0	2-10
R I P - 2 - 1 2	2-12
R I P - 2 - 1 4	2-14
R I P - 2 - 1 6	2-16
R I P - 2 - 1 8	2-18
R I P - 2 - 2 0	2-20
R I P - 2 - 2 2	2-22
R I P - 2 - 2 4	2-24
R I P - 2 - 2 6	2-26
R I P - 3 - 1 0	3-10
R I P - 3 - 1 2	3-12
R I P - 3 - 1 4	3-14
R I P - 3 - 1 6	3-16
R I P - 3 - 1 8	3-18
R I P - 3 - 2 0	3-20
R I P - 3 - 2 2	3-22
R I P - 3 - 2 4	3-24
R I P - 3 - 2 6	3-26
R I P - 4 - 1 0	4-10
R I P - 4 - 1 2	4-12
R I P - 4 - 1 4	4-14
R I P - 4 - 1 6	4-16
R I P - 4 - 1 8	4-18



CATALOG NO	Size
R I P - 4 - 2 0	4-20
R I P - 4 - 2 2	4-22
R I P - 4 - 2 4	4-24
R I P - 4 - 2 6	4-26
R I P - 5 - 1 0	5-10
R I P - 5 - 1 2	5-12
R I P - 5 - 1 4	5-14
R I P - 5 - 1 6	5-16
R I P - 5 - 1 8	5-18
R I P - 5 - 2 0	5-20
R I P - 5 - 2 2	5-22
R I P - 5 - 2 4	5-24
R I P - 5 - 2 6	5-26
R I P - 5 . 5 - 1 0	5.5-10
R I P - 5 . 5 - 1 2	5.5-12
R I P - 5 . 5 - 1 4	5.5-14
R I P - 5 . 5 - 1 6	5.5-16
R I P - 5 . 5 - 1 8	5.5-18
R I P - 5 . 5 - 2 0	5.5-20
R I P - 5 . 5 - 2 2	5.5-22
R I P - 5 . 5 - 2 4	5.5-24
R I P - 5 . 5 - 2 6	5.5-26

## REVISION FEMUR SHAFT LOCKING SCREW - Titanium



CATALOG NO	Size
R K V - 0 1	STD

## REVISION TIBIA INSERT LOCKING SCREW - Titanium



CATALOG NO	Size
R K V - 0 2	STD

## REVISION STRAIGHT LOCKING ADAPTER SCREW - Titanium



CATALOG NO	Size
R O A V - 0 1	STD

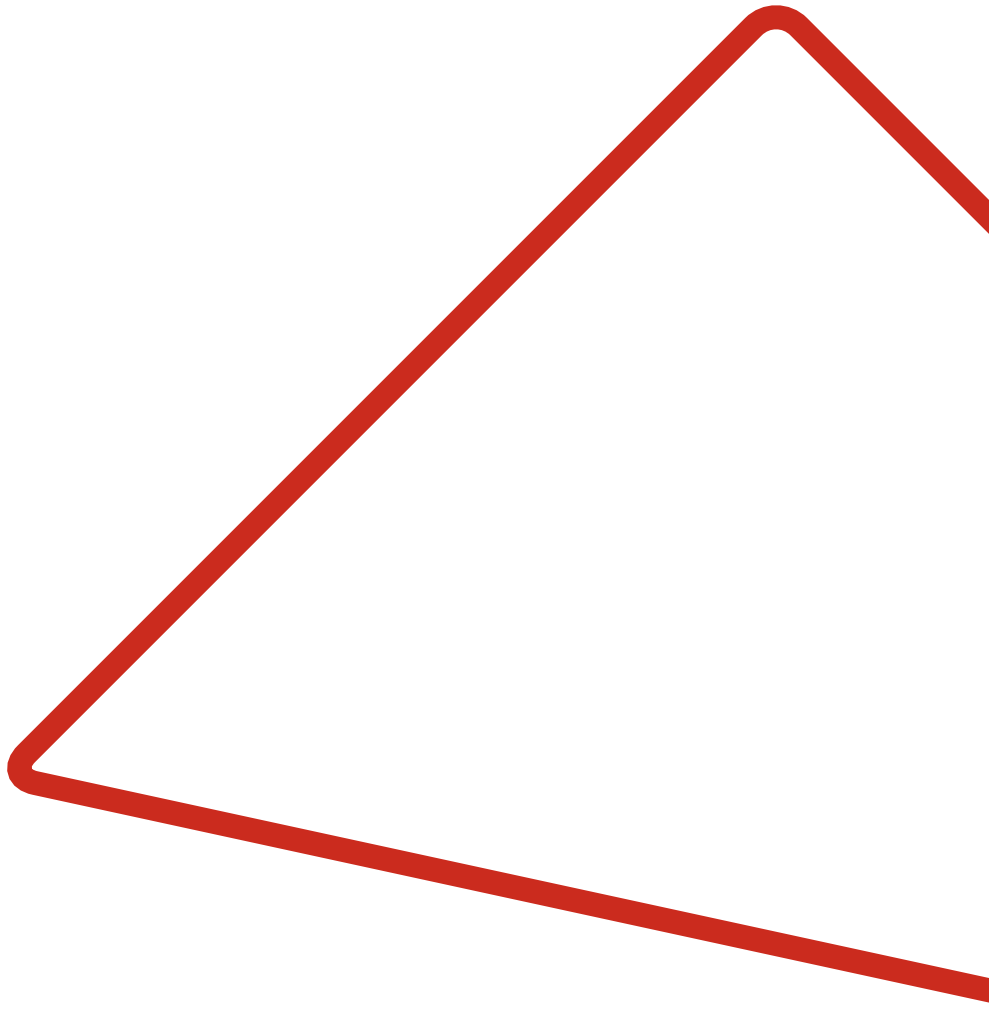
## REVISION OFFSET LOCKING ADAPTER SCREW - Titanium



CATALOG NO	Size
R O A V - 0 2	STD

# ORTOKNEE





e-catalog



[www.ortonom.com.tr](http://www.ortonom.com.tr)

[info@ortonom.com.tr](mailto:info@ortonom.com.tr)

Tel. +90 (312) 440-8151

Fax. +90 (312) 440-8586

Prof. Dr. Ahmet Taner Kışlalı Mah.  
2797. Cad. No: 10 Çayyolu - Çankaya  
Ankara - Turkey

  
ORTONOMEDICAL